

MONTHLY MEMBERSHIP PROGRESS REPORT

District 201C1

Results as of: 6/30/2024

GMT:

LOCATION AUSTRALIA

GMT CA

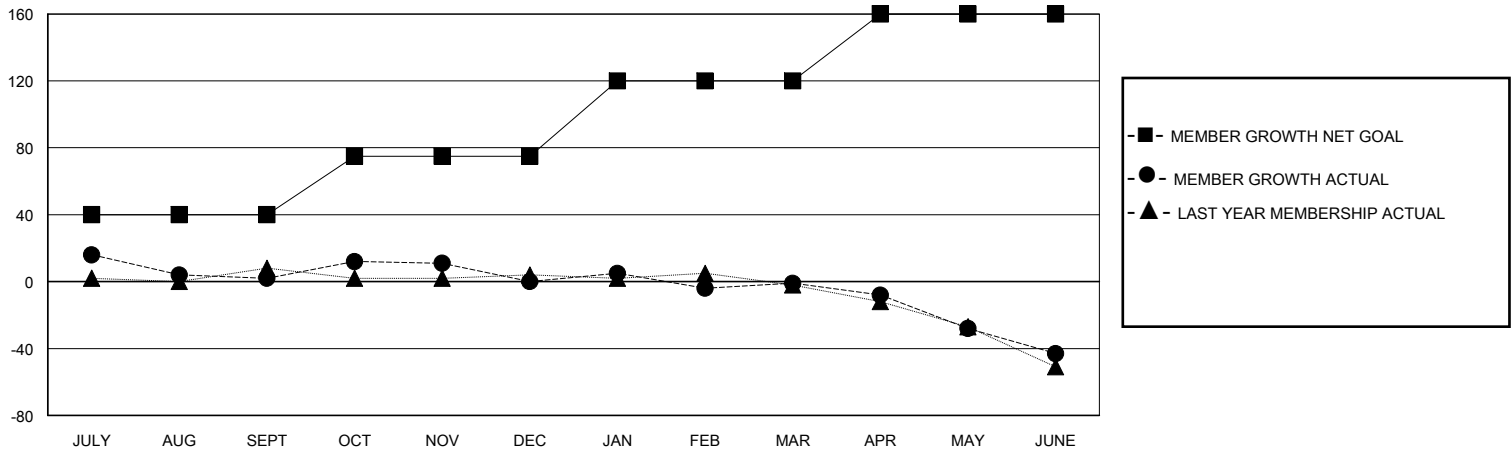
Clubs			
RESULTS FOR 2023-2024			
QUARTER	NEW CLUB GOAL	NEW CLUBS	DROPPED CLUBS
JULY/AUG/SEPT	0	0	0
OCT/NOV/DEC	0	0	0
JAN/FEB/MAR	0	0	1
APR/MAY/JUNE	1	0	0

Members			
RESULTS FOR 2023-2024			
QUARTER	MEMBER GROWTH NET GOAL	MEMBER GROWTH ACTUAL	DROPPED MEMBERS ACTUAL (including transfers)
JULY/AUG/SEPT	40	48	35
OCT/NOV/DEC	35	50	40
JAN/FEB/MAR	45	28	24
APR/MAY/JUNE	40	33	70

GOALS AND ACTUAL NEW CLUBS CUMULATIVE



GOALS AND ACTUAL MEMBERS CUMULATIVE



DROPPED CLUBS: 1	37 CLUBS OF 54 ADDED 1 OR MORE NEW MEMBERS	GENDER DISTRIBUTION MALE 699 (66.44%) FEMALE 353 (33.56%)
DROPPED MEMBERS DECEASED 26 CLUB CANCELLED 0 OTHER 142 TOTAL 168	CLICK HERE FOR CUMULATIVE MEMBERSHIP DATA	TOTAL FAMILY UNIT MEMBERS 114 FAMILY MEMBERS PAYING HALF DUES 58